

Offering greater security and ease of integration

MTL™500 provides a combination of protective elements to create a double locking mechanism, making this platform an ideal locking solution for customers looking for more than the standard locking solution.

Enhanced key copy control

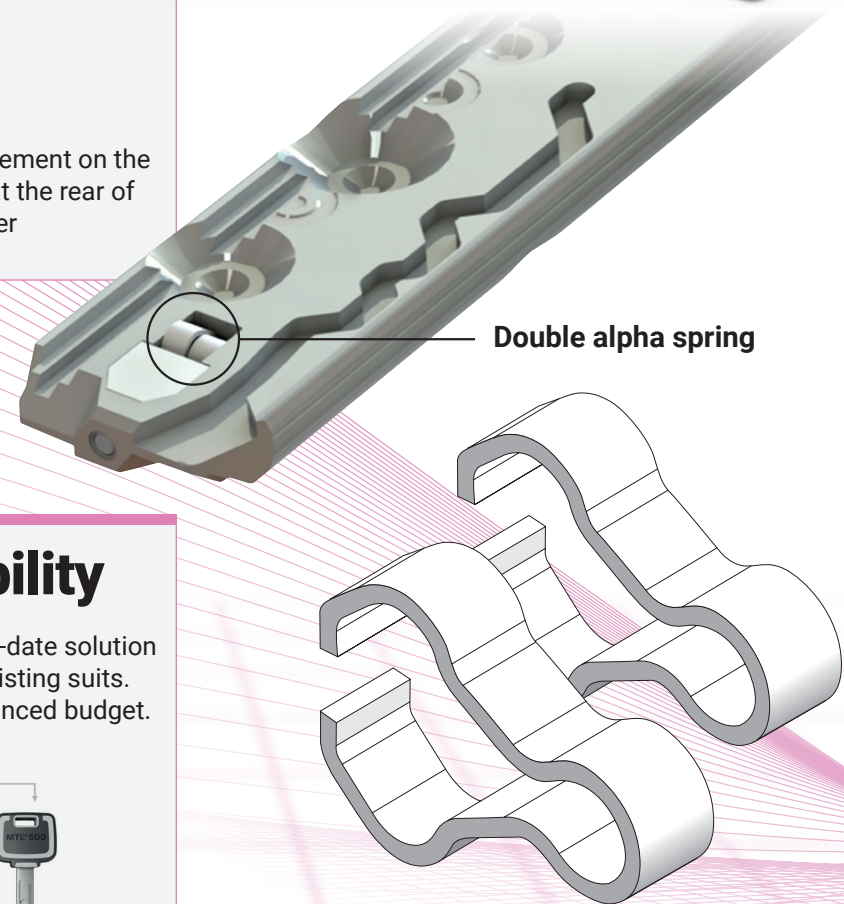
Give your customers the peace of mind they want and deserve. Mul-T-Lock takes every possible measure to reduce unauthorized key duplications.

The MTL™500 patented system together with a unique magnetic card grants your customers enhanced key copy control.



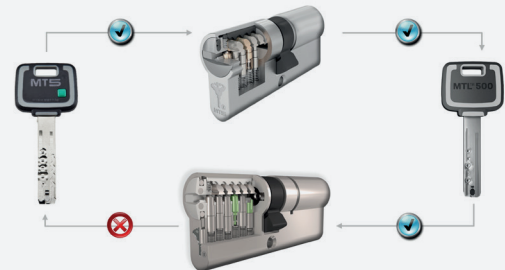
Improved keying technology

Double alpha spring - a patented moving element on the key blade's tip, engages with a unique pin at the rear of the cylinder, creating an added security layer



Backward compatibility

MTL™500 offers the integration of an up-to-date solution with existing systems across numerous existing suits. Allowing for a gradual transition and a balanced budget.

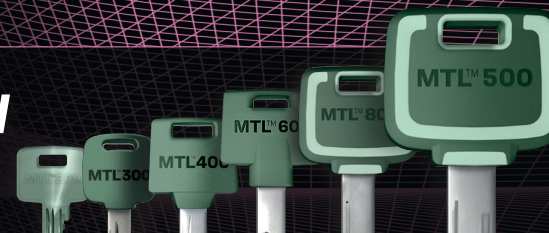


Comprehensive range of products

| | | |
|--|---|--|
|  Breaksecure Cylinders |  Euro Single and Double Cylinders |  Euro Turn Cylinders |
|  Rim and Mortice Cylinders |  UK Oval Cylinders |  Bullet Locks |
|  Scandinavian Oval Cylinders |  Anti-Lig Cylinders |  Classroom Cylinders |
|  Cam Locks |  Switch Cylinders |  Drawer Locks |
|  NE/NG Padlocks |  C-Series Padlocks |  Diamond Hasplocks |

Please refer to the Mul-T-Lock price list for availability

AntiBacterial KEY BLANKS



Its all about your client's safety.
Ask us about our AntiBacterial Keys,
available across all cylinder platforms.



For further information please call us on:
01902 364200
or email internalsales@mul-t-lock.co.uk

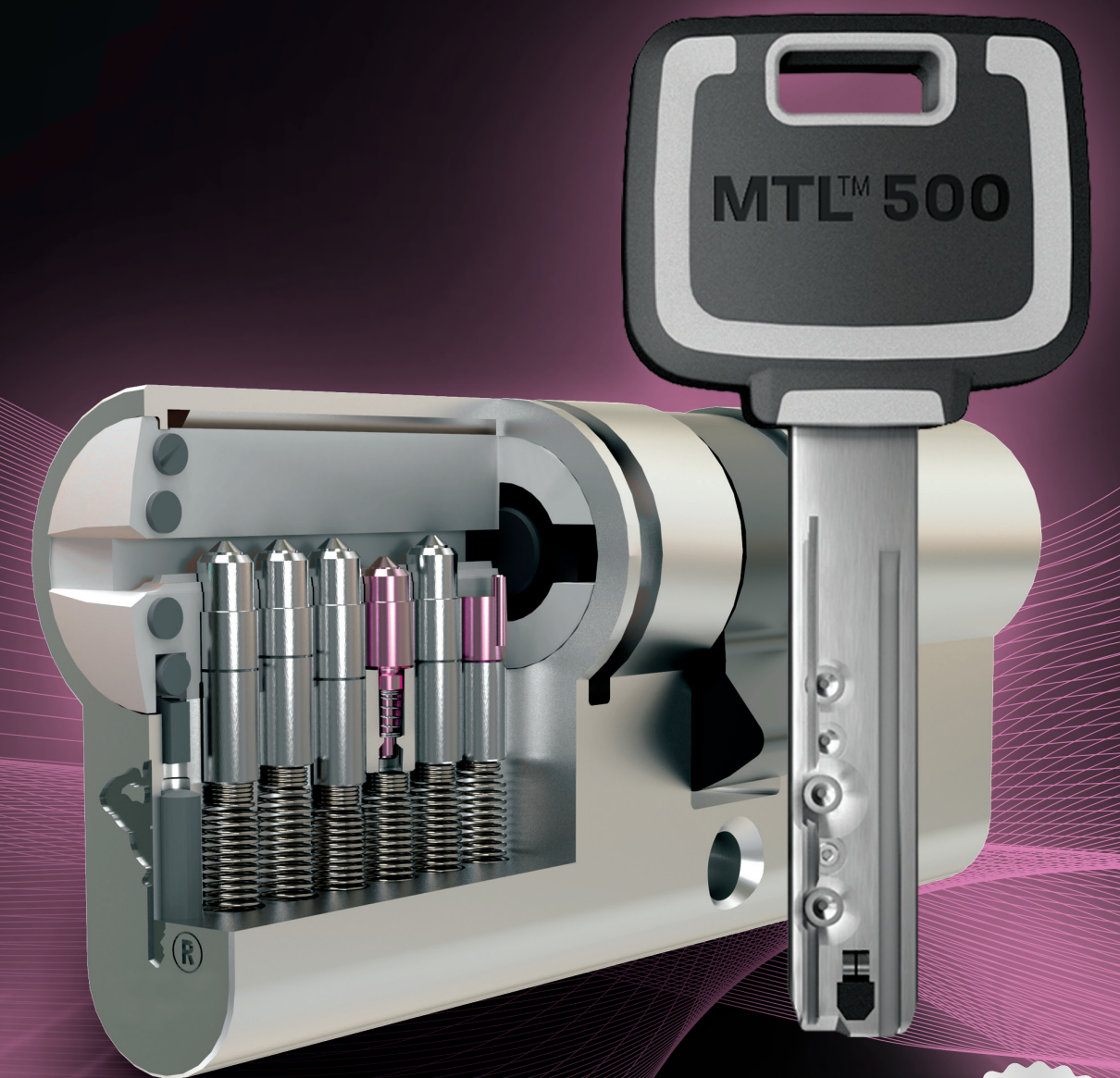


The Mul-T-Lock name, the muscleman logo, in the field of locking products, the MTL name, and any other name, mark, or logo used by Mul-T-Lock and marked by a "™" or "®" sign, are registered/pending or otherwise owned trademarks of Mul-T-Lock Ltd. and/or its affiliates 2025
Part of ASSA ABLOY

**LOCKSMITH
RECOMMENDED BRAND**

MTL™500

Excellent Protection



MTL™500

Offering next-level protection

Designed for maximum flexibility and convenience


MTL™500 multi-patented mechanical platform integrates advanced technology for premium security together with heighten key control.


Ideal for medium to large sized business customers, this is a locking system that integrates with various locking products and provides a variety of keying options and advanced master key capabilities that will address their diverse needs.


Features & benefits


- Provides a combination of protective elements to create a double locking mechanism
- Double alpha spring - a patented moving element on the key blade's tip, engages with a unique pin at the rear of the cylinder, creating an added security layer
- Keyed-alike and master keyable for added convenience
- Wide range of cylinder and padlock types and sizes to fit every application
- Quick and easy to pin and assemble, using the same key machine and pinning kits as Mul-T-Lock's previous patented platforms
- Patented key protection until 2040 for guaranteed legal protection against unauthorised key duplication
- Bespoke key inserts to promote your business
- Flat reversible key with variety of key options from nylon head, nylon head with key inserts, all metal and anti-bacterial

Resistant to:


 Picks

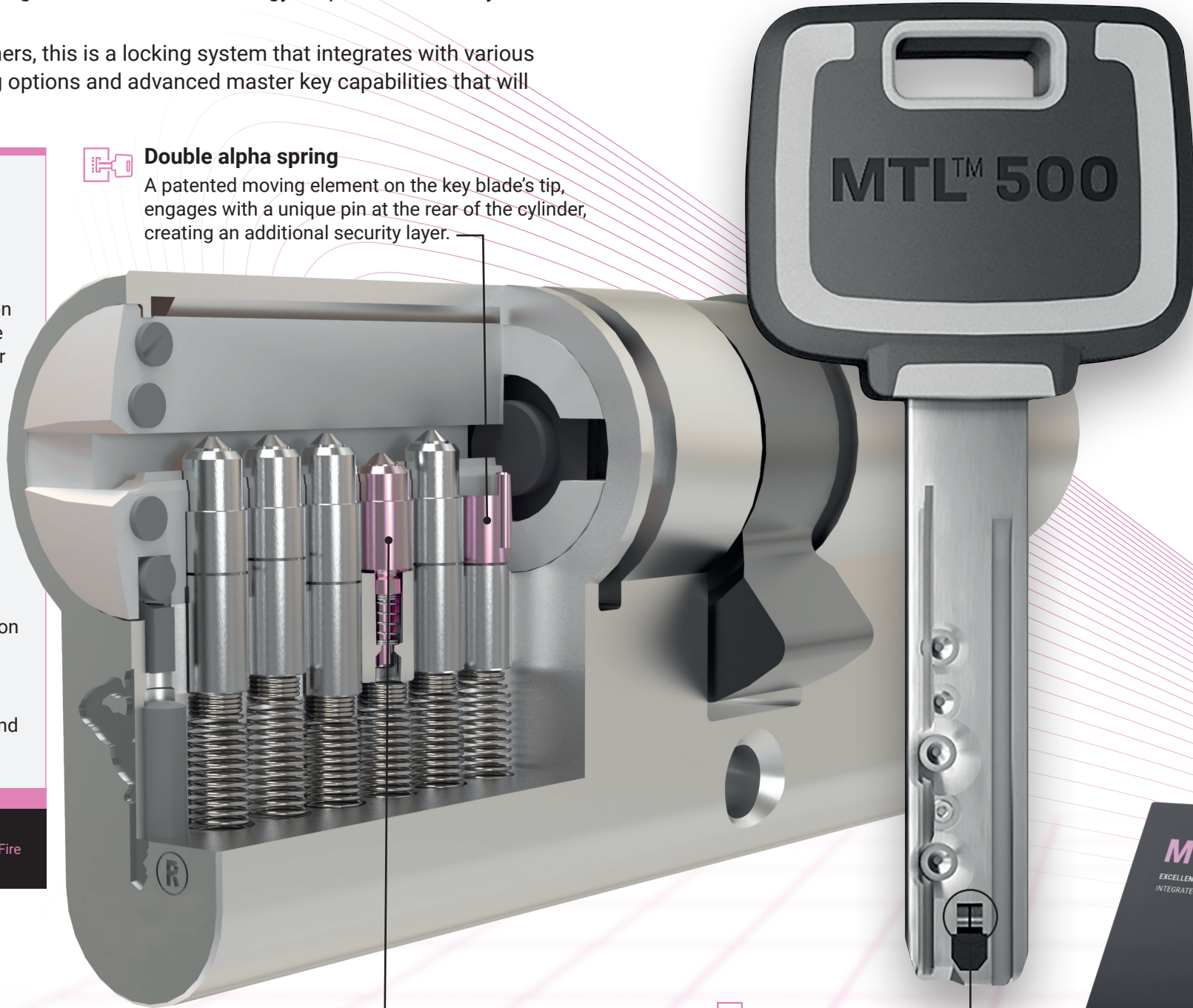
 Bumps

 Drills


 Fire

The cylinder's milled pattern can be used to create exclusive keyways, providing home and business owners with the flexibility they need to meet their specific needs.

 **Double alpha spring**
A patented moving element on the key blade's tip, engages with a unique pin at the rear of the cylinder, creating an additional security layer.



 **MTL500 next-gen telescopic pin technology**

 **Double alpha spring**
Patented Double Alpha Spring, a special mobile element at the tip of the key, engages an additional level of security for enhanced protection.



Advanced keying options

MTL™500 offers a variety of keying options together with a master keying hierarchy for different locking products and environments.

Construction
Provides access to multiple doors with a common key, then instantly switches to unique combinations when necessary, rendering the common key useless once construction is completed.

Keyed Alike
Access multiple doors with a single key.

Emergency
Operated with keys inserted and rotated on opposite sides, enabling both sides to be permanently operational.

3 in 1
Instantly change a lock's combination up to 2 times by simply turning a key.

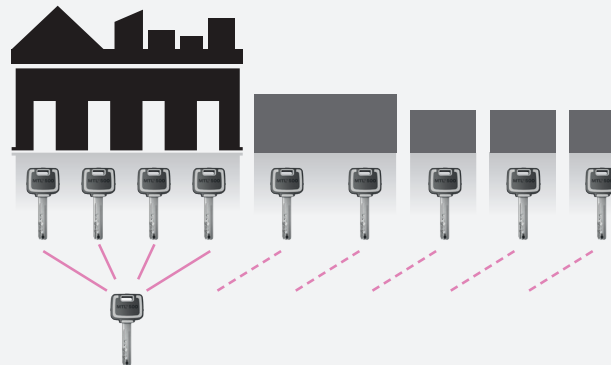
Break Secure
Designed to snap off when attacked, leaving the main portion of the cylinder intact and fully functioning.

Powerful master keying capabilities

MTL™500 supports large and complex master key systems, incorporating hierarchy and matrix requirements, even within the same suite.

The backward compatibility function enables your customers to secure their facilities with an up-to-date, high security solution, while the new master keys remain compatible with previous products.

In addition, customers can gradually upgrade their existing systems, rather than replacing the whole system at once, saving them precious financial resources.



MTL™500 can handle complex master key systems and can be easily expanded upon as a business grows.

KC5 key machine

Easy, fast and efficient, the smart KC5™ keycutting machine pushes the boundaries with electronic control and self-calibration. Simple to use, it can handle keys for all Mul-T-Lock cylinder platforms, including MTL™500.


Build long-lasting customer relationships with the KC5™ key cutting machine:

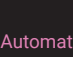
Automatic cutting
With Mul-T-Lock's KC5™ software interface, you'll be able to automatically cut large series of MTL™500 keys, easily and conveniently.

On-site engraving
An add-on kit allows you to offer and deliver more to your customers, faster. We value and support our partners!

If you already know and love using the KC5™ key cutting machine, you will be happy to learn that we've made sure you'll be able to continue using it with the MTL™500, without having to overhaul your same tooling or pinning kit.

The KC5 offers:

 Automatic cutting

 On-site engraving

