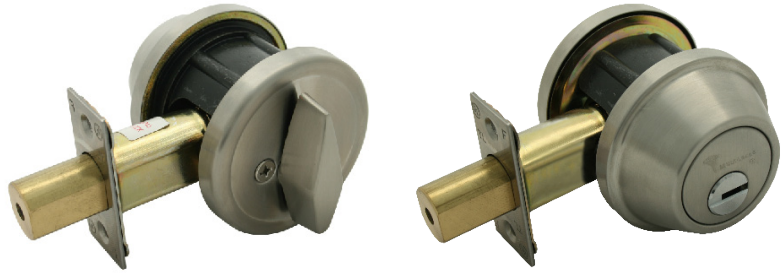


Cronus



Application

Provide protection for residential and commercial doors.

Features

- Single cylinder (with thumbturn) or double cylinder
- Robust cylinder protector
- Steel core rosettes
- Stylish design
- Easy and convenient Installation using Mul-T-Lock installation jig

Operation

High Security k.i.k. cylinder

Specifications

- Locking bolt reinforced with hardened steel insert
- Full 1" (25 mm) bolt throw
- Adjustable backset:
2 $\frac{3}{8}$ " (60 mm) or 2 $\frac{3}{4}$ " (70 mm)
- Door thickness:
1 $\frac{3}{8}$ " (35 mm) to 1 $\frac{3}{4}$ " (45 mm)

Standard finishes

PVD-Gold, polished stainless steel (US32), brushed stainless steel (US32D).

Cylinder mechanism

Mul-T-Lock's unique, high precision pin tumbler system.

Keys

Reversible nickel silver key with plastic key head and colored insert for identification. Also available in all nickel silver.

Cylinder options

- Classic, Interactive® platforms
- Keyed different, keyed alike
- Master keyed

